

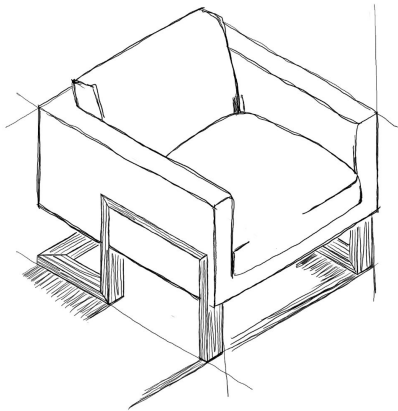


LEX LEE

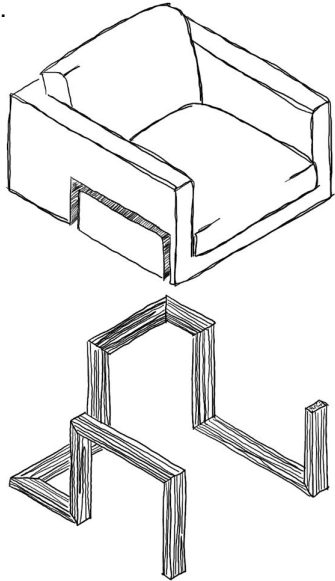
The creative portfolio of Lex Lee with an emphasis on:

- **Furniture Design & Fabrication**
- **Client Presentations**
- **Interiors & Hand Drafting**

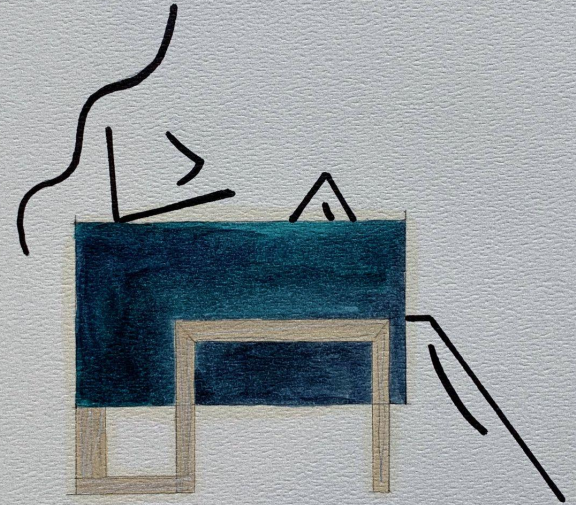
Dragons are a huge spiritual and design inspiration for me. I drew this blue dragon pattern as part of a new exploration in interior design. Look for these boxes on each page for a description of what you are looking at.



Cotton Inc. "Chairing Styles"
Furniture Design Competition;
1st Place.



FURNITURE DESIGN & FABRICATION



White Oak, Brass, Goose Down. This chair design landed me the production management role at Lloyd's Custom Furniture and lifelong mentorship of Anthony Kafesjian.



These were made during my time with Lloyd's Custom Furniture. I made all of the construction drawings and oversaw a team of 16 carpenters, upholsterers, and seamstresses.





MEDITATION CUSHIONS



BEAN BAG CHAIRS

I've managed the production of over 300 unique pieces of furniture. I'm obsessed with how things sit and matching pattern repeats.

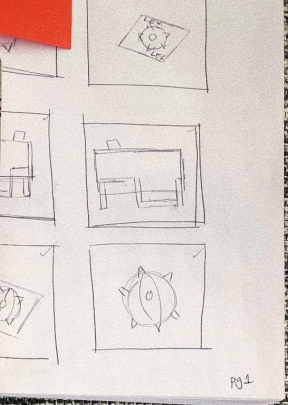
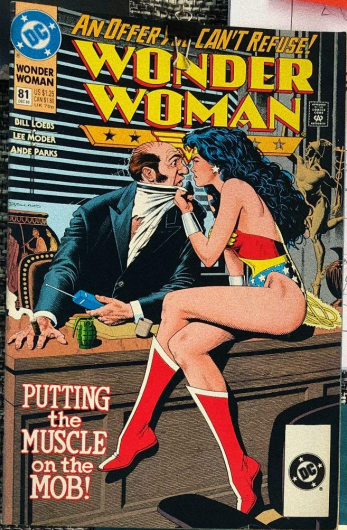




SPIKE PILLOW©



I began making these pillow sculptures in 2013. Everything is hand-made by me and my dear friend Cesar. Looks dangerous but is very soft.

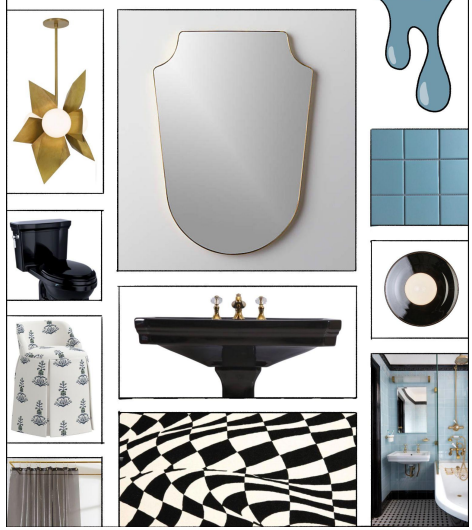


PARTI

COLOR PALETTE #003

CLIENT PRESENTATIONS

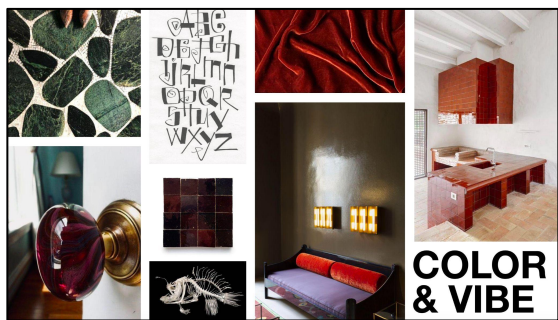
	PROJECT: <i>GOTH BABY</i>	PLG TYPE: <i>MOOD BOARD</i>	01/01
	LOCATION: <i>GUEST BATH</i>	NOTES: <i>GLOSSY BLACK + PEARL BLUE PORCELAIN, FLAJOLO 15% NOT PLATE SERRAVALLO</i>	



DEVELOPMENT

Retail Fixtures developed for Nike's presence in Big 5. Wardrobe Racks, Inline Fixtures, Versatile Accessories.

art | design | development | production



Client presentations and children's books have a lot in common. They must be simple in their communication, clear in their direction, and have pretty pictures.



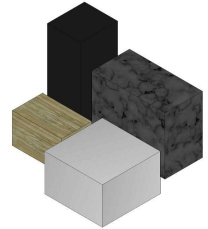
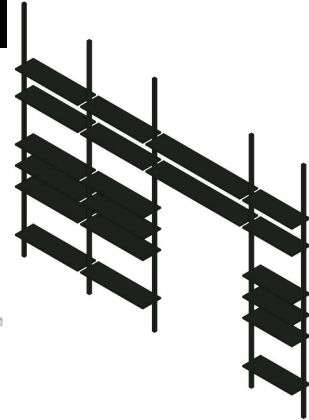
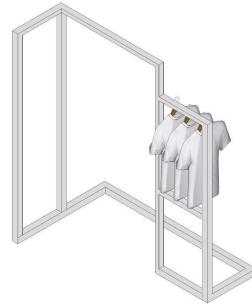
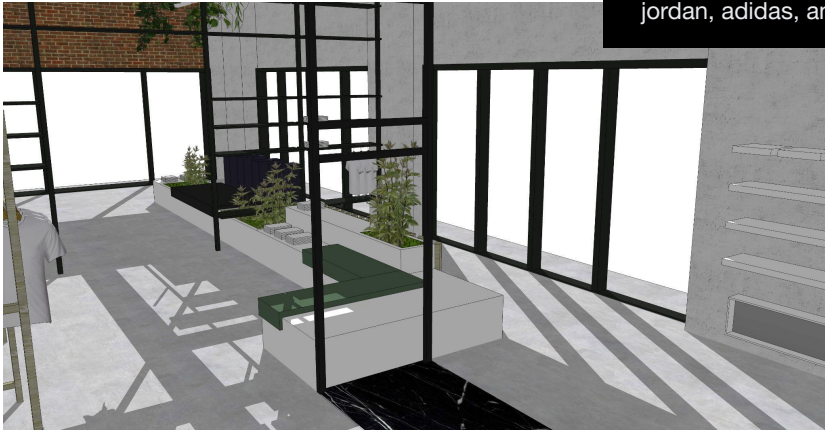
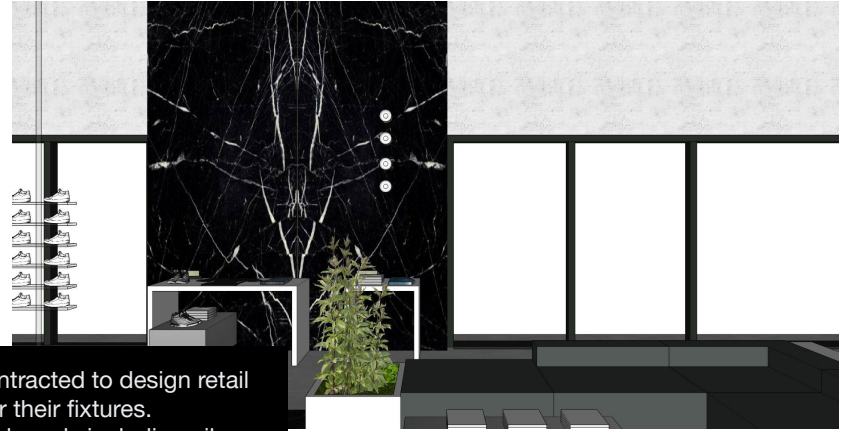
Let's talk interiors. My first internship turned junior design role was with Kim Alexandriuk. Her sample library and lighting ethos were a spiritual awakening for me.

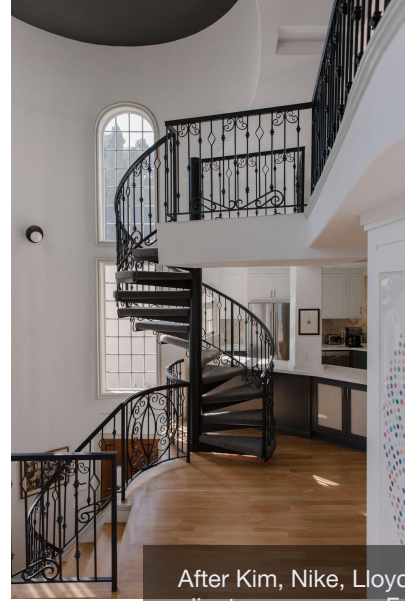


Store Design for the Chicago-based streetwear retailer, SVRN

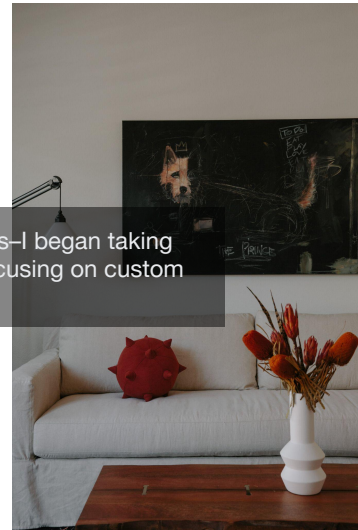


After Kim, I was contracted to design retail stores and engineer their fixtures. I have designed for brands including nike, jordan, adidas, and carhartt.





After Kim, Nike, Lloyd's—I began taking clients on my own. Focusing on custom wherever I could.

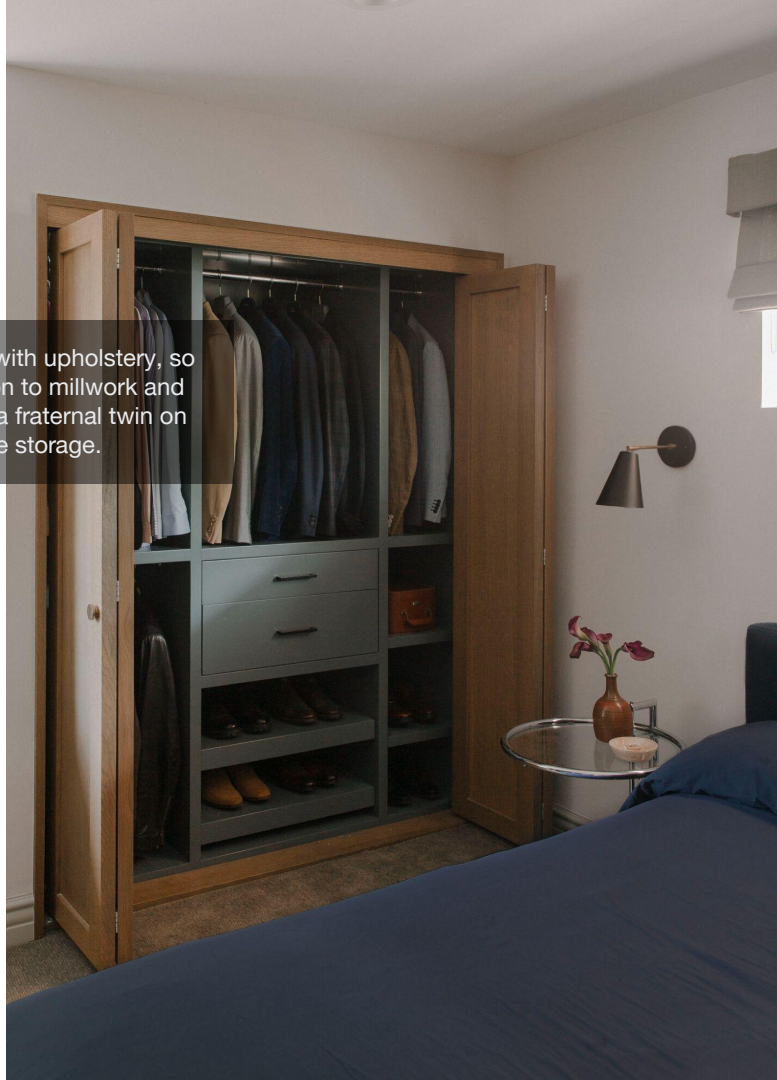




BEFORE



By this time I was an expert with upholstery, so I was able to turn my attention to millwork and case goods. This closet has a fraternal twin on the other side with more shoe storage.





I took a career break during the pandemic and explored new interests including the great outdoors, comic illustration, making signs, building online communities and getting bangs. Thank you for your time, I hope you enjoyed your stay.

